

EDM DIE SINKER MACHINE

GT-7160



DIE SINKING Wedm GT-7160

This series of machine tools is used in conjunction with a pulse power supply cabinet. The Z-axis is equipped with a Japanese Sanyo servo motor, featuring Z-axis CNC characteristics. The X and Y axes of the three-axis linkage EDM machine use precision ball screws, and the coordinates are displayed using a precision grating digital display, ensuring high coordinate positioning accuracy.

The three-axis linkage EDM machine's electrical cabinet uses an advanced industrial control motherboard, which is powerful, stable, and easy to operate. By inputting only a few parameters such as the Z-axis depth, it can retrieve matching machining data from a rich expert database system, automatically completing the roughing and finishing process in one operation.

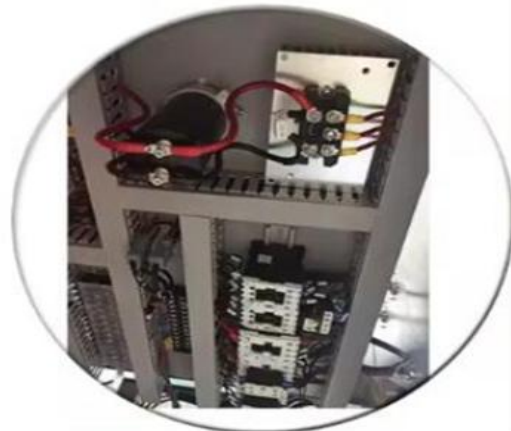
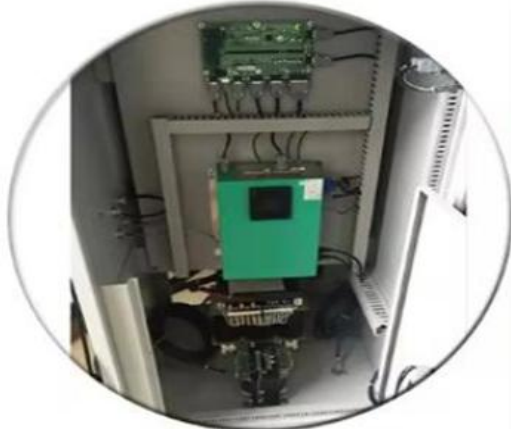
Main Features

- * High speed 400mm³/min.
- * Surface roughness ≤Ra0.8μm.
- * Japan SANYO DC servo motor in Z axis.
- * X,Y axes adopts precise ball screw.
- * Professional database system.
- * Taiwan control system.
- * Germany guideway. PVC coating for wear resistance.
- * SIEMENS, Germany AC contactor.
- * OMRON relay.
- * Japan high frequency power tube.
- * Harbin bearings.P5 grade.
- * Castings,HT250 resin sand.

Technical Specification details :

MACHINE MODEL	UNIT	GT-7160
Worktable Area (Length × Width)	mm	1000 x 600
Working Slot (Length × Width × Height)	mm	1680 x 850 x 580
X axis travel	mm	600
Y axis travel	mm	450
Z axis travel	mm	250 + 450
Distance between Electrode &Worktable	mm	800
Max. Workpiece Weight	kg	1000
Max. Electrode Weight	kg	150
Machine Weight	kg	3000
Machine Dimension	mm	1700 x 1600 x 2400
Power supply		3-phase 380V 50Hz

ELECTRICAL PART :



WORKPIECE SHOW :

